

## MERCEDES GLC - 2015-present

### HY (HYBRID)-SEREC (RECLINED)

Our ref: H0623

#### PACKAGING REQUIREMENTS.

##### ☐ CARGO LINER

- 4x Ref:121 75 mm
- 2x 460 mm 30mm wide self-adhesive loop fastener
- 2x 630 mm 20mm wide self-adhesive loop fastener
- 5x self-adhesive loop fastener tabs



##### ☐ LIFTGATE COVER

- 20 x tabs self-adhesive loop fastener



REF:121



#### VERY IMPORTANT PREPARATION

To ensure a good bond, when using the self-adhesive hook & loop fasteners to attach the cover to the plastic trim it is most important to remove silicone film from the vehicle trim. Silicone is applied during manufacture and can also be found in many detailing products. It is **highly likely there will be a build-up of silicone**. Before applying any self-adhesive fastener pads, the surface **MUST be thoroughly** cleaned using a silicone remover. (The fasteners cannot be used once it has been in contact with silicone). We recommend Intensive Tar Remover made by AutoGlym. Wipe off thoroughly **any residue with a separate clean dry cloth**.

**NOTE:** the adhesive takes 24hrs to reach full adhesion – do not touch during.



## STEP 1. PREPARATIONS

- Remove the cargo cover. It may be replaced later.
- Please set the rear seat recline to the most reclined position. (Image A)

*Please note: not all of the photographs are specific to your vehicle*



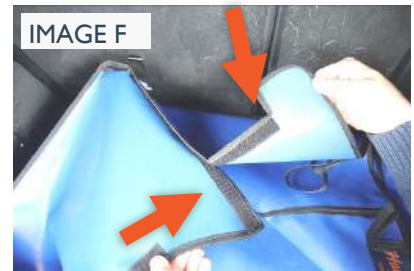
## STEP 2. INSTALLING THE BASE

- Fold the rear seats flat prior to placing the cargo liner into the cargo area.
- Place the cargo liner into the cargo area with the Hatchbag logo at the seat end. Flatten the base so it fits snugly against the edges. (Image B)
- Push the foam-filled tabs on the front end of the base into the slot between the base and the rear seats. Fold the seats back up trapping the foam-filled tabs. (Image C)
- Familiarize yourself with the position of the 5 hook fastener welds on the reverse side of the liner at the liftgate end. Stick the 5 loop fastener tabs as shown on (Image D)
- Stick the 460mm self-adhesive loop fastener strips on the chrome bars located on either side of the liftgate end of the cargo area. (Image E)
- Attach the fasteners sewn onto the underside of the cargo liner base to the previously attached fasteners. (Image E)



### STEP 3. INSTALLING THE FRONT

- **- PLUS / SPLIT VERSION ONLY** - Fasten the hook & loop fasteners between the side panel and the seat panel. (Image F)
- Starting with the middle headrest loop the hook & loop fastener straps around both headrest posts. (Image G). Make sure to hold the front part of the base in position to avoid pulling the cargo liner too far up. Repeat the procedure with the left and right seat.

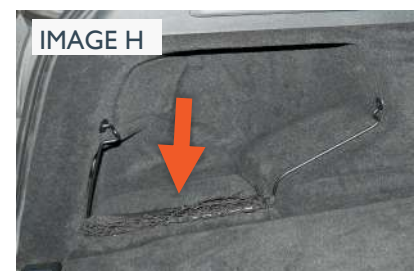


### REAR PLUS VERSIONS

You **MUST** unfasten the hook & loop fasteners and the headrest straps before you recline the upper parts of the rear seats. (Please refer to **REAR PLUS** options on website to see detailed photos)

### STEP 4 INSTALLING THE SIDES

- Please push the net on the left side net fully down. (the net will not be usable with the Cargo liner installed) (Image H)
- Attach the 20mm wide self-adhesive loop fasteners strips to the bottom edge of the side plastic panels just above the carpeted area. (Image I)
- Fasten the hook fastener on the top edge of the Cargo liner to the previously attached fastener strip. Push the Cargo liner pocket into the cargo area recesses on both sides so that they sit snugly in place. (Image I)
- Insert 2 ref:121 fastener tabs on each side of the liftgate end of the cargo area. To do this, peel back the rubber and slot the plastic end of the fastener tabs into the void behind the carpeted panel of the cargo area. (Image J)
- Slide these fastener tabs up or down so that they align with the hook fasteners on the rear sides of the cargo liner. (Image K)



# OPTIONAL EXTRAS

*Please note the following photos are not specific to your vehicle*

## STEP 5A. LIFTGATE COVER

- Line up the liftgate cover with the liftgate and clean the areas where the self-adhesive fastener tabs will be stuck. (Image 1)
- Use the self-adhesive loop fastener tabs to attach the cover to the plastic trim.



## STEP 5B. BUMPER FLAP

- Install Cargo liner
- Attach the Bumper Flap to the loop fastener strip that located the base of the Cargo liner.
- The Bumper Flap either folds into the vehicle OR can be detached and stored elsewhere when you close the liftgate.



## STEP 5C. CARGO FLOOR EXTENSION

*The Cargo Liner Extension provides superior protection to the rear seats when purchased with a REAR PLUS option.*

- The Cargo Liner Extension is designed to attach to a Rear Plus version liner.
- It provides additional protection to the back of the front seats and the extended floor area when the rear seats are folded flat.
- It does not offer full protection to the rear doors.



*The Bumper Flap and the Cargo Liner Extension cannot be added at a later date.*