

## BMW X4 2015 - 2018

Our ref: H0609 – ALL VERSIONS

### INSTALLATION KIT CONTENTS:

- CARGO LINER
  - x6 Ref 113 fastener tabs
  - x4 hook/loop fastener “own base tabs”
- LIFTGATE COVER
  - 25 x self-adhesive loop fastener tabs

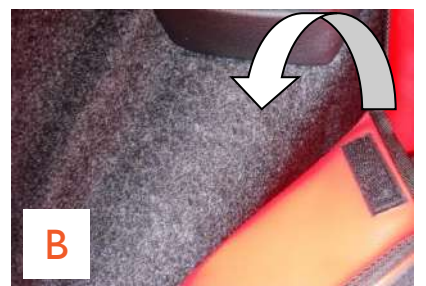
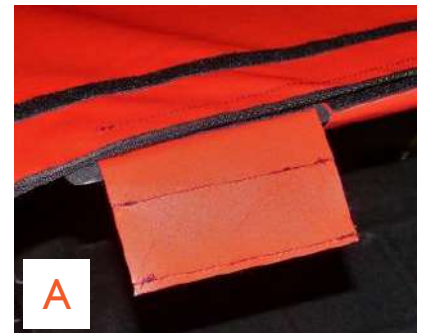


### PREPARATION

- Remove the cargo cover. It may be replaced later.
- Unfold the Hatchbag and place in the vehicle. The panel with the Hatchbag label sits against the back of the rear seats.

### BASE

- **A:** Attach the 4 “own base tabs” to the fastener located at the back side of the liner base.
- Position the base of the liner snugly into place, starting from behind the rear seats. **B;** The hook fastener on the back side of the base attaches directly to the carpet just behind the rear seats.
- **C + D;** Carefully lift the base of the liner with the false floor. Take care to keep it aligned. Wrap the tabs around to attach to the felted back side of the false floor.
- Lower floor + base panel





## INSTALLING FRONT

- **E:** Rear seat: Pull down the middle armrest to expose the release tab. Using the release tab, unlock the upper part of the middle seat, and recline slightly.
- **F:** From the cargo area pass the elastic strap around the upper part of the middle seat.
- **G:** The elastic strap sits comfortably below the middle headrest.
- Relock seat upper and armrest.
- **H:** Pass the hook & loop fastener straps around each corresponding outer headrest post and fasten back onto itself.



*Photo is not specific to your vehicle.*

## REAR PLUS VERSIONS

- **YOU MUST UNFASTEN THE HOOK & LOOP FASTENERS / HEADREST STRAPS BEFORE YOU RECLINE THE UPPER PARTS OF THE REAR SEATS**



“No Net”

## SIDE

- Position the sides of the cargo liner snugly into place.
- The hook fasteners on the back side of the side panel will attach directly to the carpet.



“With Net”



## WITH LEFTSIDE NET MODELS:

The cargo liner is designed to skim over the Net /pocket.

If you frequently wish to access this pocket, we advise you to use the pack of Ref 113 fastener tabs to reduce the amount the carpet will “fluff” up.

- Identify the 6 fastener welds (on the cargo liner side panel) in the vicinity of the net / pocket.
- Firstly, attach the 113 fastener tabs to the carpet panel - aligning them to the welds on the liner.
- The side panel will then fasten to these tabs, rather than the carpet.
- When accessing the pocket net, you can carefully peel away the cargo liner in this area, leaving the 113 tab in situ.



## OPTIONAL EXTRAS

### FREQUENT USE INSTALLATION KIT

If you frequently remove/install your Cargo liner from/to your vehicle, please note that the carpet will “fluff” up - we offer an alternative Frequent Use Installation Kit

*The Frequent Use Installation Kit is available from our online store. Simply add it to your order from the Store. The kit can also be ordered at a later date.*



*Please note not all of the photographs are specific to your vehicle.*

## BUMPER FLAP

- Install cargo liner.
- Attach the Bumper Flap to the loop fastener strip that has been manufactured into the base of the cargo liner.
- The Bumper Flap either folds into the vehicle OR can be detached and stored elsewhere when you close the liftgate.



## LIFTGATE COVER

- Use the self-adhesive loop fastener tabs to attach the cover to the plastic trim.



## VERY IMPORTANT LIFTGATE PREPARATION

To ensure the self-adhesive hook & loop fasteners stick to the plastic trim, you **MUST CLEAN** all grime from the plastic and **REMOVE** all **SILICONE** applied during manufacture and detailing.

To do this, please:

Use a silicone remover, such as AutoGlym Intensive Tar Remover, and apply generously to the surface you want to adhere to.

Using a separate clean, dry cloth, thoroughly dry the surface until the cloth starts to drag. Attach one self-adhesive fastener tab to see if it sticks. (Repeat steps 1 and 2 if necessary.) Extra tabs have been provided.

Attach the self-adhesive fasteners and let them fully adhere over the next 24 hours for the best bond.

