

MITSUBISHI OUTLANDER

7-SEATER (3RD-ROW SEATS NOT USEABLE)

2014 - 2021 Our ref: H0608-7SEAT

Packing requirements

- CARGO LINER
 - 1500mm cut length of 30mm wide self-adhesive loop fastener
 - 250mm cut length of 20mm wide self-adhesive loop fastener
 - Minimum of 14 self-adhesive loop fastener tabs
- LIFTGATE COVER
 - Minimum of 17 self-adhesive loop fastener tabs



PREPARATION

Please ensure that the rear seat backs are positioned UPRIGHT to suit the liner



RECLINED

The Cargo liner does **NOT** accommodate the rear seat uppers reclined into the cargo area



UPRIGHT

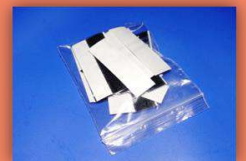
The rear seat uppers must be set at the **MOST UPRIGHT** position

Remove the cargo cover. It may be replaced later. Please note: *The cargo cover cannot be stored under the false floor in the cargo area with the Cargo liner inserted.*


VERY IMPORTANT PREPARATION

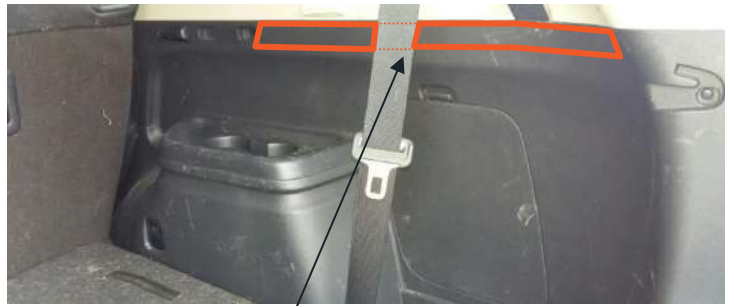
To ensure a good bond, when using the self-adhesive hook & loop fasteners to attach the cover to the plastic trim it is most important to remove silicone film from the vehicle trim. Silicone is applied during manufacture and can also be found in many detailing products. It is **highly likely there will be a build-up of silicone**. Before applying any self-adhesive fastener pads, the surface **MUST be thoroughly cleaned** using a silicone remover. (The fasteners cannot be used once it has been in contact with silicone). We recommend Intensive Tar Remover made by AutoGlym. Wipe off thoroughly **any residue with a separate clean dry cloth**.

NOTE: the adhesive takes 24hrs to reach full adhesion – do not touch during.

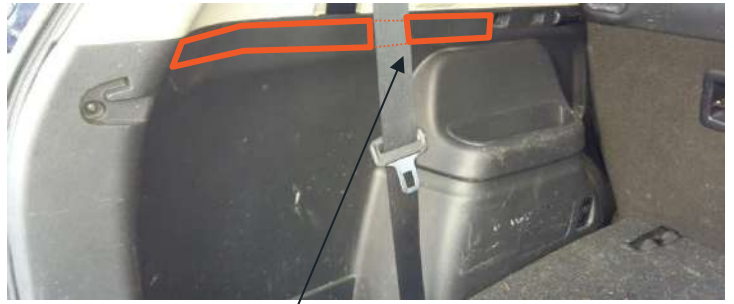


SIDES PREPARATION

- Attach 30mm wide self-adhesive loop fastener as indicate by the orange highlights 
- Fold the false floor to expose the under-floor storage
- Attach 20mm wide self-adhesive loop fastener tabs as indicated by the orange arrows



Continue to the fastener behind the seat belt




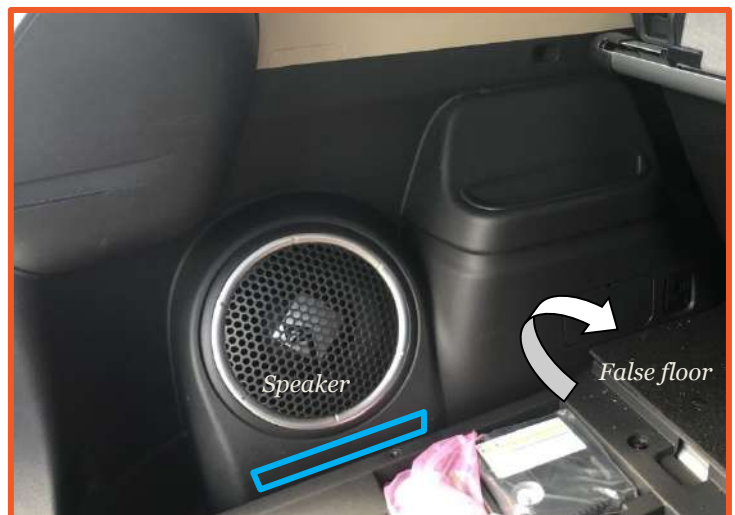
Continue to the fastener behind the seat belt



Under floor storage unit exposed

LEFT SIDE - **SPEAKER VERSIONS ONLY**

- Follow the previous steps and then....
- attach 20mm wide self-adhesive loop fastener as indicated by the blue highlights 



Under floor storage unit

SIDES

- Unfold the false floor
- Loosely place the Cargo liner into the cargo area with the liftgate end of the base folded over.



- Begin to place the side panels snugly into position – *But just fasten along to the top edges.*



- Keeping the base still folded, position the under section of the base snugly into place: The hook fasteners on the back side of the liner attach directly to the carpet.



FRONT

Pass the hook & loop fastener straps around each corresponding headrest post and fasten back onto itself.

REAR PLUS VERSIONS

Please note in future: YOU MUST UNFASTEN THE HOOK & LOOP FASTENERS / HEADREST STRAPS WHEN YOU CHOOSE TO RECLINE THE UPPER PARTS OF THE REAR SEATS



Please note photo is non-specific to your car.

SIDES continued...

- Unfold the base: the fasteners on the liner attach directly to the carpet.

Please note photo shows a Cargo liner with additional fasteners on the base and the front panel in preparation for a Bumper flap and Cargo Liner Extension



- **BASE** : carefully lift up the false floor and base panel with it.
- Use the self-adhesive loop fastener pads to attach the liftgate end of the sides.
- Position the pocket area snugly into place and fasten close to the fastener strips.
- Unfold the floor



SEATBELT COVERS

The Mitsubishi Outlander has seatbelt covers for the 3rd-row seats. Simply wrap the rectangular panel around the seatbelt and fasten.



Please note these photos are not specific to your car.

BUMPER FLAP

- Install Cargo liner
- Attach the Bumper Flap to the loop fastener strip that has been manufactured into the base of the cargo liner.
- The Bumper Flap either folds into the vehicle OR can be detached and stored elsewhere when you close the liftgate.



LIFTGATE COVER

- Use the self-adhesive loop fastener tabs to attach the cover to the plastic trim.

