

BMW 5 Series GT 2009-2017

Our ref: H0572



REF: 122



REF: 121



REF: 104



INSTALLATION KIT CONTENTS:

CARGO LINER

- 2 x ref 122 - cut length 165mm long. (**long**, part self-adhesive loop fastener tabs)
- 5 ref 121 (plastic/fastener tab)
- 10 x ref 104 (**short**, part self-adhesive loop fasteners)
- 29 x self-adhesive loop fastener tabs

LIFTGATE COVER

- 20 x self-adhesive loop fastener tabs

VERY IMPORTANT PREPARATION



To ensure a good bond, when using the self-adhesive hook & loop fasteners to attach the cargo liner to the plastic / metal trim (**Not** the carpet); it is most important to remove silicone film from the vehicle trim. Silicone is applied during manufacture and can also be found in many detailing products. It is **highly likely there will be a build-up of silicone**. Before applying any self-adhesive fastener pads, the surface **MUST be thoroughly** cleaned using a silicone remover. (The fasteners cannot be used once it has been in contact with silicone). We recommend Intensive Tar Remover made by AutoGlym. Wipe off thoroughly **any residue with a separate clean dry cloth**.

NOTE: the adhesive takes 24hrs to reach full adhesion – do not touch during.

PREPARATION

- Remove the cargo cover. It can be replaced later.



REF: 122 ONLY remove lower section of paper

BASE

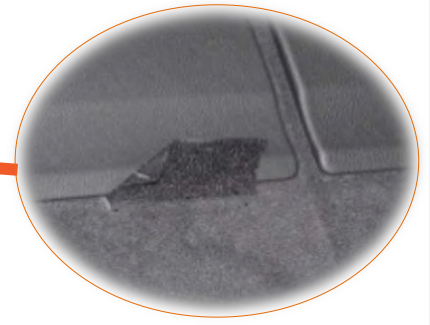
- Lift up the False Floor and attach the self-adhesive part of the tab ref 122 to the plastic molding as shown in the photo. The remaining fastener tab will sit above the false floor when closed. Repeat on opposite side. Close the False Floor.
- Unfold the Hatchbag and place in the vehicle. The panel with the Hatchbag label will sit against the back of the rear seat. Position the base snugly into place. Start behind the rear seats and work backwards.



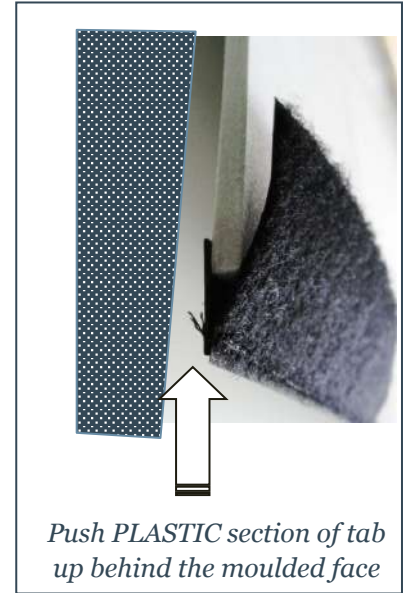
FRONT

- Pass the front panel of the Cargo Liner over the top of the Cargo Area Divider.

*To complete the next step, you may find it easier to fold down the rear **seats** and enter the vehicle through the rear passenger doors.*



- Push the plastic section of the 5 x Ref 121's up behind the moulded face. Reposition to align with the fastener welds on the Liner and fasten together.



NOTE: REAR PLUS / SPLIT VERSIONS

- **YOU MUST UNFASTEN THESE HOOK & LOOP TABS BEFORE YOU RECLINE THE UPPER PARTS OF THE REAR SEATS / CARGO DIVIDER (Please refer to REAR PLUS options on website to see detailed photo)**



PLASTIC SIDES VARIATIONS

- These photos show the two different plastic moldings we have seen on the 5 Series GT
- Differences to note:
Depth of plastic return – see tip of arrow pointing to a DEEP return on the left and a SHALLOW one on the right photo.
Light position.
- These instructions attempt to cover the installation in both models.

PLEASE NOTE: Hook fasteners do not attach to the carpet in this vehicle, so it is necessary to utilize the few suitable areas on this plastic molding.

DEEP RETURN SIDES

- Use the self-adhesive fastener tabs to attach the side panel to the “DEEP” return on the plastic molding.
- The safety triangle sits behind the nearside panel.

NOTE A: FOR REAR PLUS / SPLIT VERSIONS ONLY REFER TO NEXT PAGE ON HOW TO CREATE RELEASE CATCH RAW CUTOUTS

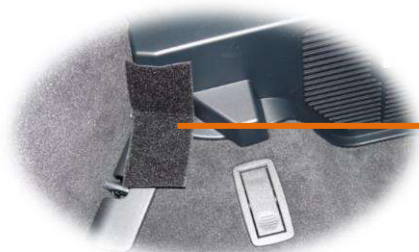
Note – if you have chosen to create the cut outs, before fastening the side, you must carefully pass the RAW cut edges around and behind the moldings of the Cargo Divider release catches.

- When the rear seats are folded you can use the remaining ref 104s to keep the front end of the sides pinned back.
- Two ties are provided to fix the lowered front panel to the chrome d rings.



SHALLOW RETURN SIDES

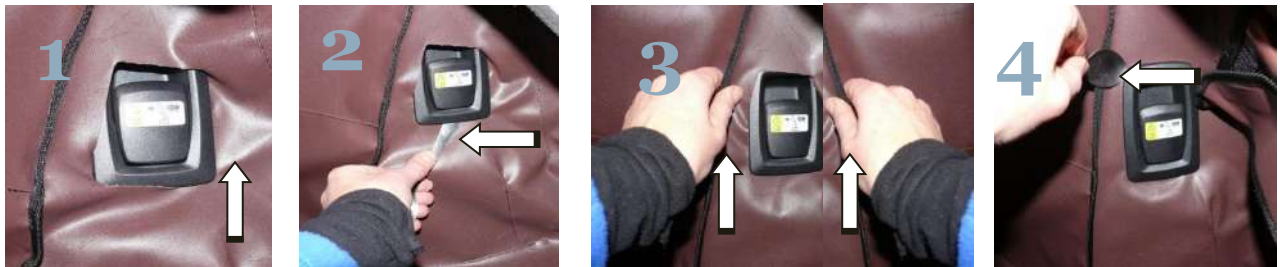
- Place sides snugly into place.
- If you have a Rear Plus / Split version, please read the [note A](#) above first.
- The “shallow return” does not provide sufficient room for the self-adhesive fasteners. We have provided 6 ref 104 fastener tabs to attach to the underside of the plastic molding.
- The arrows indicate the most suitable areas for these tabs; locate the corresponding hook fastener weld on the reverse face of the liner.
- Attach to the underside, and not just the shallow return.
- The white arrows imply these tabs will need to be trimmed to suit the available plastic.



Ref 104 attached to the under face of the plastic



- The safety triangle sits behind the left side panel.



HOW TO CREATE RELEASE CATCH RAW CUTOUTS

1. Start bottom corner – nearest to the recess. Push the raw edge under the corner of the plastic molding.
2. Gently pull the opposite bottom corner over. A teaspoon will help you to gently feed the fabric under as you go.
3. Gently pull the liner upwards with both hands: sliding the fabric under the molding and bringing the top of the cutout closer to the top of the molding.
4. Repeat with the two top corners, ending with the corner closer to you.

BACK END OF SIDES

- Use the self-adhesive loop fasteners pads to attach the back panel to the liftgate.

BACK

- Use the self-adhesive loop fasteners pads to attach the back panel to the liftgate.



Optional extras

Please note: these photos are not specific to your vehicle.

BUMPER FLAP

- Install Cargo Liner
- Attach the Bumper Flap to the loop fastener strip located at the base of the cargo liner.
- The Bumper Flap either folds into the vehicle OR can be detached and stored elsewhere when you close the tailgate.



LIFTGATE COVER

- Use the self-adhesive loop fastener tabs to attach the cover to the plastic trim.

