

Audi A7 \ S7 \ RS7 2012-2018

Our ref: H0546

Packing requirements

- CARGO LINER
 - 800mm cut length of 30mm wide self-adhesive loop fasteners
- LIFTGATE COVER
 - Minimum of 18 Self-adhesive loop fastener tabs



VERY IMPORTANT PREPARATION

To ensure a good bond, when using the self-adhesive fasteners to attach the cargo liner to the plastic / metal trim (**Not** the carpet); it is most important to remove silicone film from the vehicle trim. Silicone is applied during manufacture and can also be found in many detailing products. It is **highly likely there will be a build-up of silicone**. Before applying any self-adhesive fastener pads, the surface **MUST be thoroughly** cleaned using a silicone remover. (The fasteners cannot be used once they have been in contact with silicone). We recommend Intensive Tar Remover made by AutoGlym. Wipe off thoroughly **any residue with a separate clean dry cloth**.

NOTE: the adhesive takes 24hrs to reach full adhesion – do not disturb during.



PREPARATION

- Unfold the Hatchbag and place in the vehicle so that the base fits snugly in position. The panel with the Hatchbag label sits against the back of the rear seat.

Please note: not all the photographs are specific to your vehicle

BASE

- Position the base snugly into place. Start at the liftgate end.
- The hook fastener welded to the back side of the liner attaches directly to the carpet panels in the floor.



BACK

- Cut the long length of self-adhesive loop fastener to fit and apply to the chrome liftgate plate.
Tip: lift the rubber seal, part of the fastener can sit under it.



INSTALLING THE FRONT

- Hook & loop fastener straps align to headrests.
- Pass around each post and fasten back onto themselves.
- The hook fastener on the back side of the liner attaches directly to the carpet panels.



REAR PLUS VERSIONS

- **YOU MUST UNFASTEN THE HOOK & LOOP FASTENER AND THE HEADREST STRAPS BEFORE YOU RECLINE THE UPPER PARTS OF THE REAR SEATS** (Please refer to REAR PLUS options on website to see detailed photo)

SIDES

- Carefully position the side panels snugly into place.
- The hook fastener welded to the back side of the liner attaches directly to the carpet panels.



Optional extras

FREQUENT USE INSTALLATION KIT

If you frequently remove/install your Cargo Liner from/to your vehicle, please note that the carpet will “fluff” up – we offer an alternative Frequent Use Installation Kit.

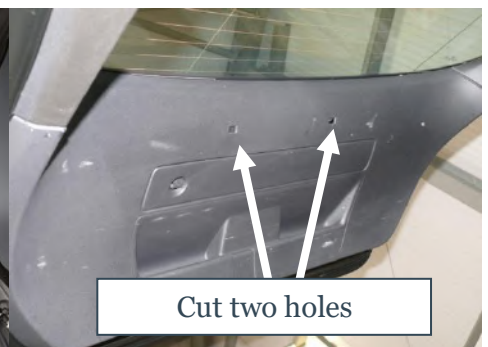
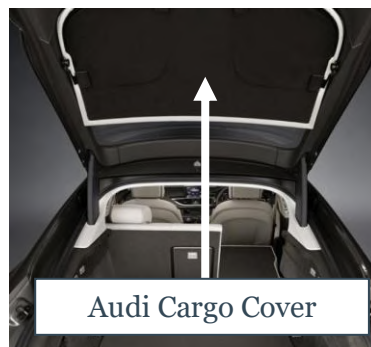
The Frequent Use Installation Kit is available from our online store. Simply add it to your order from the store.



Please note: not all the photographs are specific to your vehicle

LIFTGATE COVER

- Use the self-adhesive loop fastener tabs to attach the cover to the plastic trim.
- If you wish to replace the Audi Cargo Cover, you will need to cut two appropriate holes in the Liftgate Cover. The PVC fabric does not fray – BUT ensure you do NOT cut through the “tape/stitching”





BUMPER FLAP

- Install the Cargo Liner
- Attach the Bumper Flap to the loop fastener strip that has been manufactured into the base of the cargo liner.
- The Bumper Flap either folds into the vehicle OR can be detached and stored elsewhere when you close the liftgate.



CARGO LINER EXTENSION

The Cargo Liner Extension provides superior protection to the rear seats when purchased with a REAR PLUS liner.

- The Cargo Liner Extension is designed to attach to a Rear Plus version liner.
- It provides additional protection for the back of the front seats and the extended floor area when the rear seats are folded flat.
- It does not offer full protection to the rear doors

(These items cannot be added at a late date)