

## Volvo V60 Sports Wagon 2015 – 2018

### Load safety net removed

Our Ref: H0533-SNOUT

#### PACKING REQUIREMENTS



#### CARGO LINER

- 6 x ref: 107 (“J” profile plastic + loop fastener)
- 2 x ref: 124 (hook + loop fastener @150mm long)
- 2 x ref: 131 Cut @ 60mm wide
- 2 m length of 30mm wide self-adhesive loop fastener



REF: 107



REF: 124



REF: 131



#### PLEASE NOTE: accessory “NET POCKETS”.

- The Cargo liner does NOT accommodate these two net pockets in the cargo area.



#### VERY IMPORTANT PREPARATION

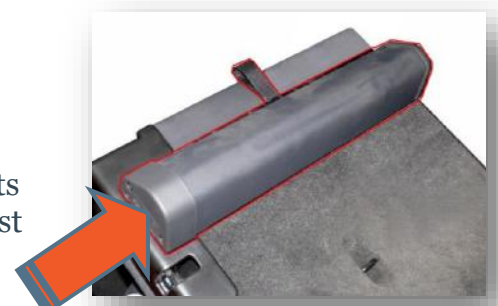
To ensure a good bond, when using the self-adhesive hook & loop fastener to attach the cargo liner to the plastic / metal trim (**Not** the carpet); it is most important to remove silicone film from the vehicle trim. Silicone is applied during manufacture and can also be found in many detailing products. It is **highly likely there will be a build-up of silicone**. Before applying any hook & loop fastener pads, the surface **MUST be thoroughly** cleaned using a silicone remover. (The hook & loop fastener cannot be used once it has been in contact with silicone). We recommend Intensive Tar Remover made by AutoGlym. Wipe off thoroughly **any residue with a separate clean dry cloth**.

**NOTE:** the adhesive takes 24hrs to reach full adhesion – do not disturb during.



#### PREPARATION

- Remove the cargo cover. It may be replaced later.
- Recline rear seats and open both rear passenger doors.
- Slide off the Cargo Safety Net
- Unfold the Hatchbag and place in the vehicle so that the base fits snugly in position. The panel with the Hatchbag label sits against the back of the rear seat.



## INSTALLATION

- Place the liner into the car and install the base snugly into place.

## BASE

### Photo A+ B

Locate the two hook fastener strips on the back side of the liner at the liftgate end.

- Photo A:**  
Lift up the false floor. Attach the two ref: 124 hook / loop fastener tabs to the floor's carpet. The hook fastener section will attach directly to the carpet.

- Photo B:**  
The tabs will protrude out of the floor panel when its replaced allowing the liner to be fastened to them.

### Photo C *(Please note this photo is non-specific to your car)*

- Push the two foam-filled tabs down into the void between the rear seat and the floor of the cargo area.



## FRONT

### Photo D+E

- Raise the central headrest to expose the headrest posts at the rear.

### Photo F

- Pass each of the corresponding hook & loop fastener straps around each headrest post, and firmly fasten on the hook fasteners below.



## REAR PLUS VERSIONS

- YOU MUST UNFASTEN THE HEADREST STRAPS BEFORE YOU RECLINE THE UPPER PARTS OF THE REAR SEATS**  
*(Please refer to REAR PLUS options on website to see detailed photo)*

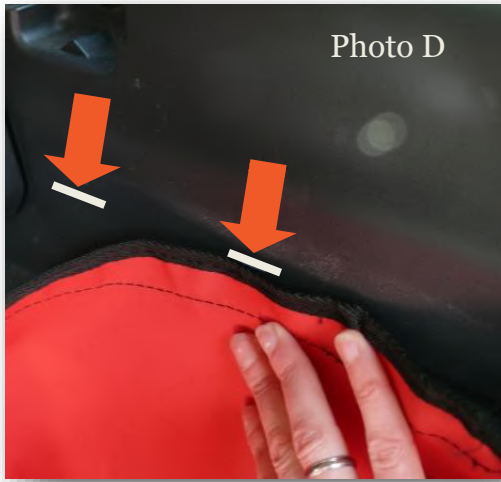


Photo D



Photo E

APPLY STRIP OF  
SELF-ADHESIVE  
LOOP FASTENER

## SIDES

### Photo D + E

- Place the side panels' snugly into place.
- Chalk the height of the liner sides onto the plastic trim: Use this as a guideline to complete the next step.
- Use the cut length self-adhesive loop fastener to attach the side panels to the plastic trim above the carpet.

### Photo F + G

- Attach the self-adhesive section of the ref: tab 131 to the under face of the outer most corners of the liftgate plate. The exposed loop fastener attaches to the hook fastener.



Photo F



Photo G

### Photo H

- Pull back the rubber seal and slide the curved part of the clip (ref. 107) behind the carpeted panel. The loop fastener section will remain exposed.
- Re-align with the hook fastener welds on the liner and fasten.



**REF: 107**



Photo H



# Optional extras

*Please note: the following photos are not specific to your vehicle.*

*The following items cannot be added at a late date*

## BUMPER FLAP



- Install Cargo liner
- Attach the Bumper Flap to the loop fastener strip located at the base of the Cargo liner.
- The Bumper Flap either folds into the vehicle OR can be detached and stored elsewhere when you close the liftgate.
- Please note that the edges of the fabric are not bound so that any mud, dirt or water can run off.

## CARGO LINER EXTENSION

*The Cargo Liner Extension provides superior protection to the rear seats when purchased with a REAR PLUS option.*



- The Cargo Liner extension is designed to attach to a Rear Plus version liner.
- It provides additional protection to the back of the front seats and the extended floor area when the rear seats are folded flat.
- It does not offer full protection to the rear doors.