

## Volvo V60 Sports Wagon 2015 - 2018

### Cargo Safety net fixed to the back of the rear seats.

Our Ref: H0533-SNIN

#### PACKING REQUIREMENTS

##### CARGO LINER

- 4 x ref: 107 ("J" profile plastic + loop fastener)
- 2 x ref: 124 (hook + loop fastener @150mm long)
- 2 x ref: 131 Cut @ 60mm wide
- 2 m length of 30mm wide self-adhesive loop fastener
- 3 of large foam-filled/loop fastener tabs



REF: 107



REF: 124



REF: 131



#### PLEASE NOTE: accessory "NET POCKETS".

- The Cargo liner does NOT accommodate these two net pockets in the cargo area.



#### VERY IMPORTANT PREPARATION

To ensure a good bond, when using the self-adhesive hook & loop fasteners to attach the cargo liner to the plastic / metal trim (**Not** the carpet); it is most important to remove silicone film from the vehicle trim. Silicone is applied during manufacture and can also be found in many detailing products. It is **highly likely there will be a build-up of silicone**. Before applying any hook & loop fasteners pads, the surface **MUST be thoroughly** cleaned using a silicone remover. (The hook & loop fasteners cannot be used once it has been in contact with silicone). We recommend Intensive Tar Remover made by AutoGlym. Wipe off thoroughly **any residue with a separate clean dry cloth**.

**NOTE:** the adhesive takes 24hrs to reach full adhesion – do not disturb during.



#### PREPARATION

- Remove the cargo cover. It may be replaced later.
- Ensure the "Cargo Safety Net" is attached to the back of the rear seats.
- Unfold the Hatchbag and place in the vehicle so that the base fits snugly in position. The panel with the Hatchbag label sits against the back of the rear seats.



## INSTALLATION

- Place the liner into the car and install the base snugly into place.

## BASE

### Photo A+ B

Locate the two hook fastener strips on the back side of the liner at the liftgate end.

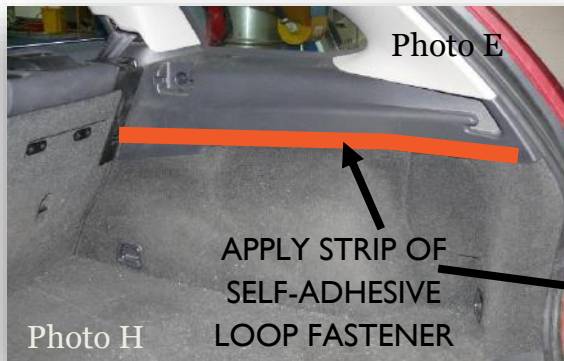
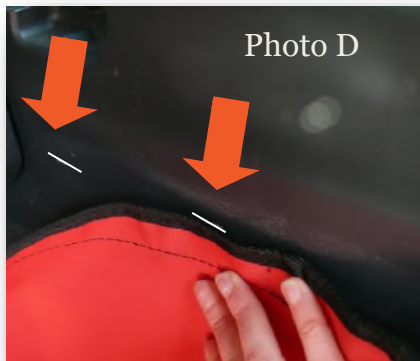
- Photo A:**  
Lift up the false floor. Attach the two ref: 124 hook / loop fastener tabs to the floor's carpet. The hook fastener section attaches directly to the carpet.

- Photo B:**  
The tabs will protrude out of the floor panel when its replaced allowing the liner to be fasten closed to them.

*(Please note: this is not specific to your car)*

### Photo C

- Push the two foam-filled tabs down into the void between the rear seat and the cargo area.



## SIDES

### Photo D + E

- Place the side panels' snugly into place.
- Chalk the height of the liner sides onto the plastic trim: Use this as a guideline to complete the next step.
- Use the cut length self-adhesive loop fastener to attach the side panels to the plastic trim above the carpet.

### Photo F + G

- Attach the self-adhesive section of the ref: tab 131 to the under face of the outer most corners of the liftgate plate. The exposed loop fastener attaches to the hook fasteners.



## SIDES CONTINUED

### Photo H

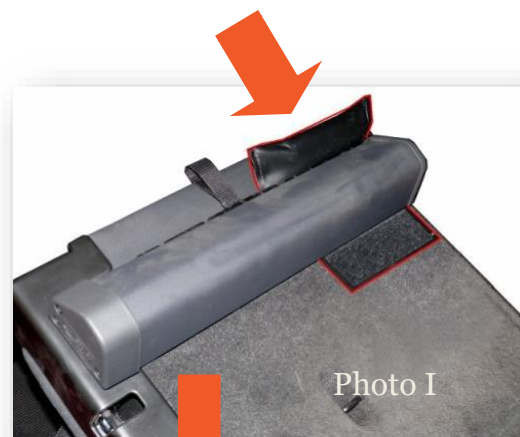
- Pull back the rubber seal and slide the curved part of the clip (ref. 107) behind the carpeted panel. The loop fastener section will remain exposed.
- Re-align with the hook fasteners on the liner and fasten.



## FRONT

### Photo I

- Familiarize yourself with the positioning of the hook fastener stitched to the back side of the front panel.
- Pass the loop fastener ends of the separate large foam filled/loop fastener tabs down into the void behind the retractable cargo cover and the rear seat upper.
- The largest of the 3 sits in the middle, and the smallest goes through the offside gap.
- The loop fastener should now be visible below the cargo cover.
- Position to correspond with the hook fastener.



### Photo J

- Re-lock the rear seat uppers, trapping the 2 base foam-filled tabs securely. (Referred to in photo C)
- The cargo cover may dislodge the front end of the sides: it is necessary to feed the fabric behind the ends.
- Attach the front panel to the foam-filled loop fastener tabs. (Referred to in photo D)



## REAR PLUS VERSIONS

- **YOU MUST UNFASTEN THESE TABS BEFORE YOU RECLINE THE UPPER PARTS OF THE REAR SEATS**

(Please refer to REAR PLUS options on website to see detailed photos)



## Optional extras



*Please note: the following photos are not specific to your vehicle.*

### BUMPER FLAP

- Install Cargo liner
- Attach the Bumper Flap to the loop fastener strip located at the base of the Cargo liner.
- The Bumper Flap either folds into the vehicle OR can be detached and stored elsewhere when you close the liftgate.



### CARGO LINER EXTENSION

The Cargo Liner Extension provides superior protection to the rear seats when purchased with a REAR PLUS option.

- The Cargo Liner Extension is designed to attach to a Rear Plus version liner.
- It offers additional protection to the back of the front seats and the extended floor area when the rear seats are folded flat.
- It does not offer full protection to the rear doors.

*(These items cannot be added at a later date)*